



polycon
surface water drainage

LITE *Prem*

Service . Range . Knowledge

Welcome To Polycon

Polycon is identified as one of the leading manufacturers, distributors, and suppliers of channel drainage in the UK. We focus on creating a diverse range of water solutions, in various materials, including composite, polymer concrete, SMC, and steel.

Polycon's unique look at the market and expert knowledge of the industry ensures we can supply a wide range of high-quality products suitable for any application. This includes building drainage, landscaping, sports facilities, distribution centres, highways, and airports.

Our design team provides innovative and efficient hydraulic solutions to ensure we can offer your drainage needs the best product/solution. We have a vast and experienced overview of our working industry and have been manufacturing, distributing, and selling channel drainage for over 8 years. We thrive on acting upon your feedback to improve and develop our products to fit flawlessly with the constantly changing market and demand from our customers.

At Polycon we focus our attention on professionals who sit within the construction industry, targeting our products to specifiers, architects, engineers, and contractors. Therefore, we understand the importance of expanding our product portfolio to create the most efficient surface water drainage systems.

We are a dynamic and evolving company with a focus on quality, innovation, and service. As a result, you can rely on us to handle your project needs in every way to the best of our ability.

Contents

<i>Lite Prem</i>	3
<i>Lite Prem Overview</i>	5
<i>Lite Prem - 65mm depth</i>	7
<i>Lite Prem - 100mm depth</i>	9
<i>Lite Prem - 150mm depth</i>	11
<i>Offset Paveslot</i>	13
<i>Twin Paveslot</i>	14
<i>Installation Guide</i>	15

Service • Range • Knowledge

LITE Prem

The Lite Prem channel supplied by Polycon boasts a range of exceptional benefits that set it apart as a top choice for drainage solutions. The Lite Prem system has been designed and manufactured from High-Density Polyethylene (HDPE). This possesses a range of features and benefits, tailored for high-performance drainage systems and efficient water flow.

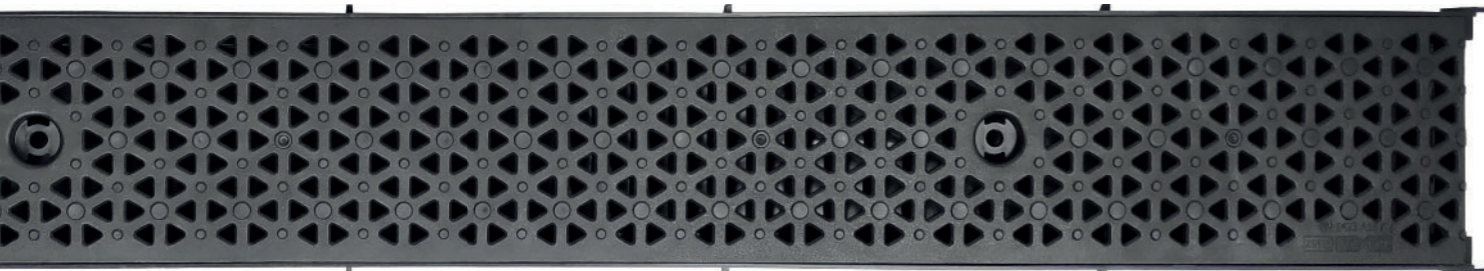
The Lite Prem's material properties mean that the system can withstand significant impacts and create a long-lasting life cycle without the need for aggressive maintenance. One of the standout features of the Lite Prem channel is its remarkable chemical resistance.

Whether it encounters aggressive chemicals or corrosive substances, this channel remains unfazed, maintaining its structural integrity and functionality.

Its smooth, waterproof surface enhances its versatility and ease of maintenance, preventing water from pooling in unwanted areas.

When it comes to efficient water management, the Lite Prem channel truly excels. Its quick water flow capability ensures rapid drainage, minimizing the risk of water pooling and related issues. Additionally, with a generous offering of 10+ gratings, users can customise their drainage solutions to suit specific needs, making it an ideal choice for various applications. Overall, the Lite Prem channel by Polycon is a reliable and versatile solution that combines lightweight convenience with exceptional performance.

*Conformity Manufactured in compliance with ISO 9001:2000
Certified in compliance with EN1433 Fully CE Certified with the
declaration of performance certificate.*



Load Classes



1.5t

A15
1.5 tonnes



12.5t

B125
12.5 tonnes



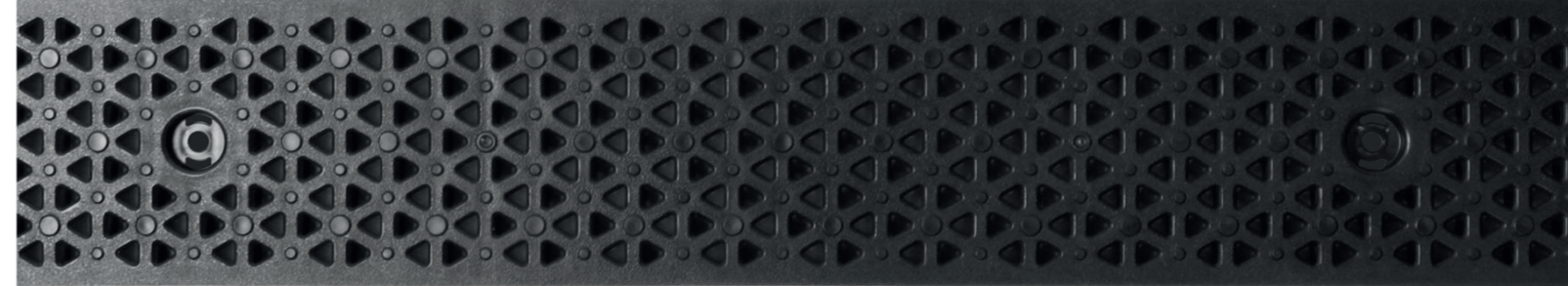
25t

C250
25 tonnes

Applications

- Bus Terminals
- Landscaping Areas
- Pedestrian Areas
- Shopping Centres
- Car Parks
- Petrol Stations

LITE Prem



VIRTUAL LANDSCAPE

Not sure what you are looking for? Check out our Pegasus systems against multiple paving backgrounds on our virtual landscape feature. You can mix and match gratings against multiple backgrounds to achieve the ultimate desired look. Each visual can be downloaded as a PDF and sent to customers along with a technical overview of your chosen system. Try today at www.polycon.co.uk.



LITE Prem - Overview

Material

The Lite Prem is a lightweight plastic drainage channel. The material is both incredibly light and has a strong exterior. This helps to reduce labour expenses because little to no machinery is required for installation. It is a long-lasting option for urban projects, and because of its improved protection, water vapour cannot pass through it.

Outlet

The bottom outlet in the base of the channel allows for downward drainage into a 110mm sewer connection. Break the outlet in the marked area with a hammer and then insert the outlet in the channel fixing it with the four screws supplied.

Channel Colour Options

Black



SAFEHEEL

Grating Options

There is an array of grating options, providing consumers with unparalleled flexibility to tailor their drainage solutions to specific requirements. With over 10 diverse grating choices available, including stainless steel, composite, and ductile iron, customers can select the perfect material to match their project's needs. Stainless steel grating delivers a sleek, modern aesthetic and exceptional durability, making it ideal for environments requiring both style and strength. Composite grating offers a lightweight, cost-effective solution without compromising on performance. Meanwhile, ductile iron grating is known for its robustness and load-bearing capacity.

Load Classes



A15



B125



C250

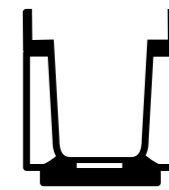
Depth Options



65mm



100mm

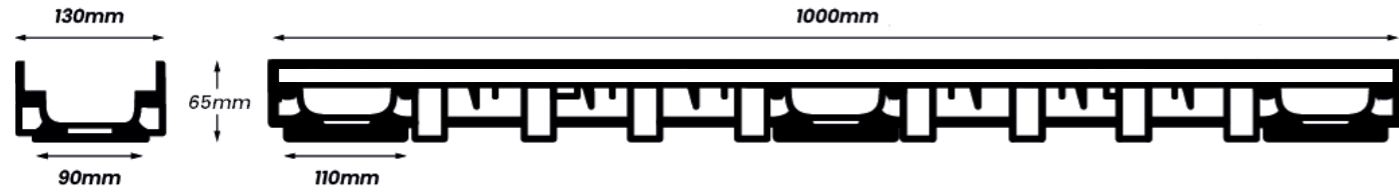


150mm

LITE Prem - 65mm depth

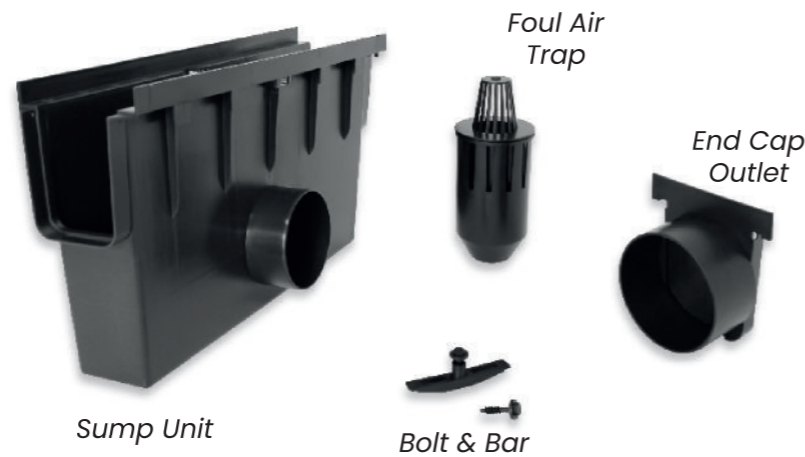
The Lite Prem is one of the most adaptable drainage systems on the market since it is durable, flexible, and lightweight. There are many alternatives for your projects thanks to the 10+ grating options allowing for up to C250 loading capacity.

Product Specs: Please see the diagram and table below for specific measurements on the Lite Prem 100 System *Note the diagram used in the example below is for the Lite Prem 100 - 65mm version.



Accessories

- End Cap Outlet
- End Cap
- Sump Unit
- Bolt & Bar
- Foul Air Trap



Sump Unit: The Sump Unit is excellent for collecting debris and waste that can get into the system. It comes with a silt bucket inside for easy cleaning.

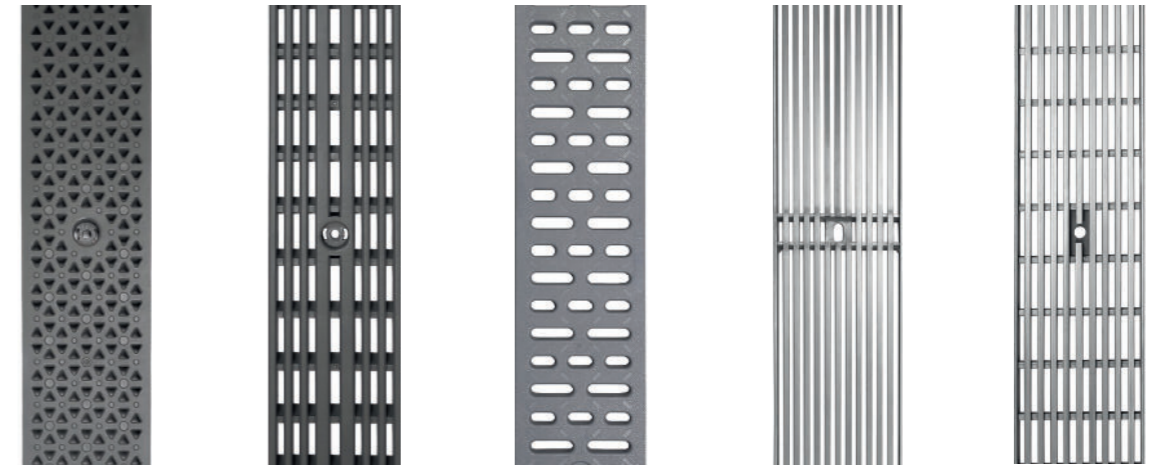
The Foul Air Trap: Acts as both a blocker of foul air from drains and a filter for debris such as leaves.

The End Cap/Outlet: Doubles up as an end cap for the channel or you can knock out the center to convert it into an outlet.

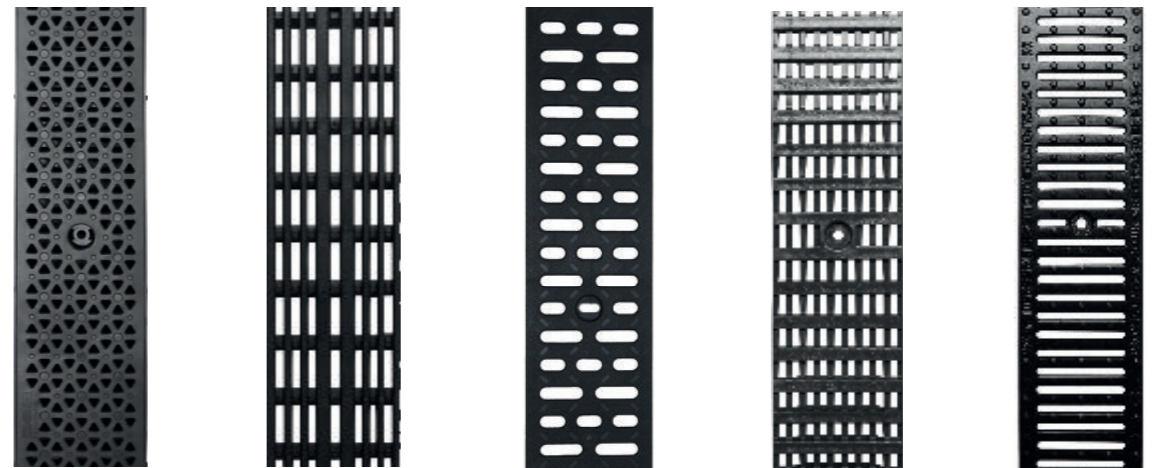
The Bolt & Bar: A simple but strong locking device for securing down the gratings on this Lite Prem 100 System.

Reference	Height (mm)	Invert Height	Overall Width	Weight (KG)	Load Class	Outlet Inv. Height	Outlet
LITE.P.100.SUMP	280	260	130	1.2	A,B,C	250	110
LITE.P.100.EC	150	n/a	130	0.4	A,B,C	n/a	110
LITE.P.100.O	150	n/a	130	0.6	A,B,C	n/a	110
LITE.P.100.FAT	90	n/a	85	0.4	A,B,C	n/a	110
LITE.P.100.BB	11	n/a	95	0.1	A,B,C	n/a	n/a

Grating Options - 65mm



Composite Diamond Grey (A15) Composite Longitudinal Grey (A15) Composite Slotted Grey (A15) Stainless Steel Longitudinal (C250) Stainless Steel Mesh (C250)



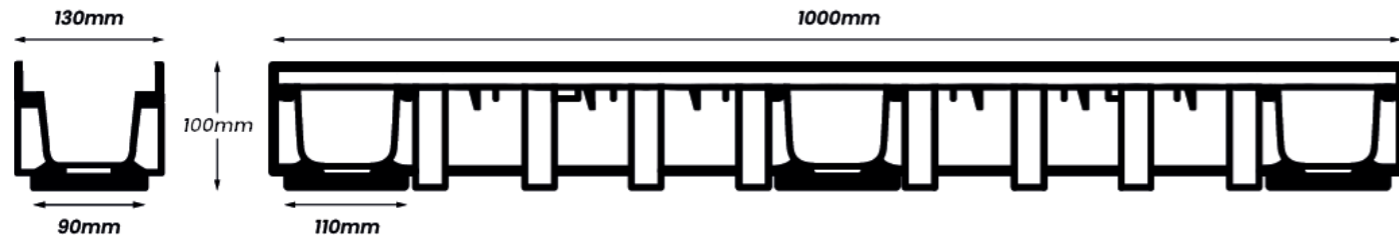
Composite Diamond Black (A15) Composite Longitudinal Black (A15) Composite Slotted Black (A15) Composite Mesh (B125) Ductile Iron Slotted (C250)

Reference	Description	Length (mm)	Slot Width	Overall Width	Load Class	SafeHeel
GR.100.D.C.B	Composite Diamond Black	1000	6mm	123mm	A15	✓
GR.100.D.C.G	Composite Diamond Grey	1000	6mm	123mm	A15	✓
GR.100.L.C.B	Composite Longitudinal Black	1000	7mm	123mm	A15	✓
GR.100.L.C.G	Composite Longitudinal Grey	1000	7mm	123mm	A15	✓
GR.100.S.C.B	Composite Slotted Black	1000	10mm	123mm	A15	×
GR.100.S.C.G	Composite Slotted Grey	1000	10mm	123mm	A15	×
GR.100.M.C	Composite Mesh	500	7mm	123mm	B125	✓
GR.100.P.SS	Stainless Steel Longitudinal	1000	6mm	123mm	C250	✓
GR.100.M.SS	Stainless Steel Mesh	1000	6mm	123mm	C250	✓
GR.100.S.DI	Ductile Iron Slotted	500	8mm	123mm	C250	✓

LITE Prem – 100mm depth

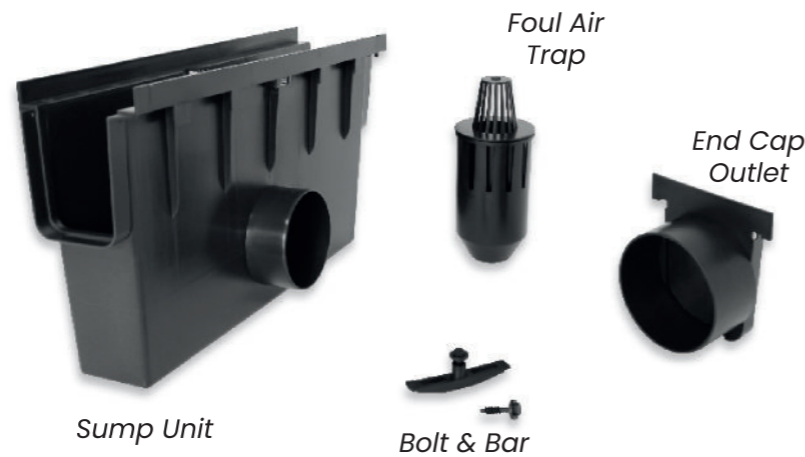
The Lite Prem 100 is one of the most adaptable drainage systems on the market since it is durable, flexible, and lightweight. There are many alternatives for your projects thanks to the 10+ grating options allowing for up to C250 loading capacity.

Please see the diagram below for specific measurements on the Lite Prem 100 System



Accessories

- End Cap Outlet
- End Cap
- Sump Unit
- Bolt & Bar
- Foul Air Trap



Sump Unit: The Sump Unit is excellent for collecting debris and waste that can get into the system. It comes with a silt bucket inside for easy cleaning.

The Foul Air Trap: Acts as both a blocker of foul air from drains and a filter for debris such as leaves.

The End Cap/Outlet: Doubles up as an end cap for the channel or you can knock out the center to convert it into an outlet.

The Bolt & Bar: A simple but strong locking device for securing down the gratings on this Lite Prem 100 System.

Reference	Height (mm)	Invert Height	Overall Width	Weight (KG)	Load Class	Outlet Inv. Height	Outlet
LITE.P.100.SUMP	280	260	130	1.2	A,B,C	250	110
LITE.P.100.EC	150	n/a	130	0.4	A,B,C	n/a	110
LITE.P.100.O	150	n/a	130	0.6	A,B,C	n/a	110
LITE.P.100.FAT	90	n/a	85	0.4	A,B,C	n/a	110
LITE.P.100.BB	11	n/a	95	0.1	A,B,C	n/a	n/a

Grating Options – 100mm



Composite Diamond Grey (A15)



Composite Longitudinal Grey (A15)



Composite Slotted Grey (A15)



Stainless Steel Longitudinal (C250)



Stainless Steel Mesh (C250)



Composite Diamond Black (A15)



Composite Longitudinal Black (A15)



Composite Slotted Black (A15)



Composite Mesh (B125)



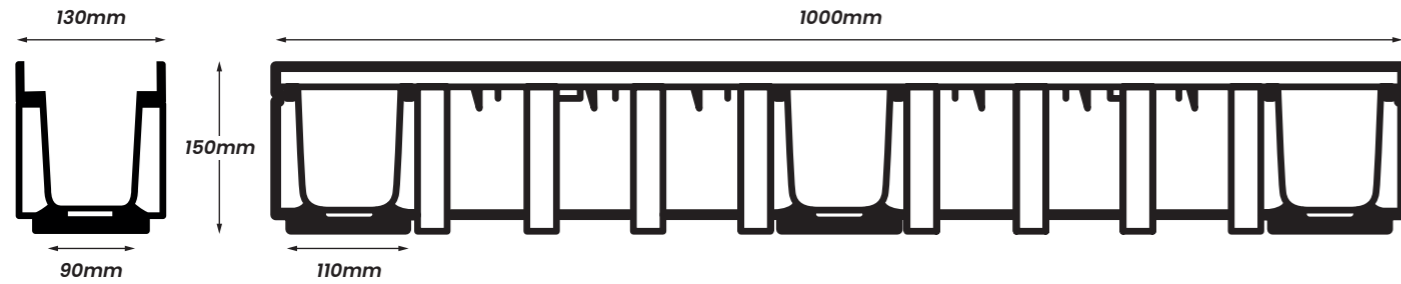
Ductile Iron Slotted (C250)

Reference	Description	Length (mm)	Slot Width	Overall Width	Load Class	SafeHeel
GR.100.D.C.B	Composite Diamond Black	1000	6mm	123mm	A15	✓
GR.100.D.C.G	Composite Diamond Grey	1000	6mm	123mm	A15	✓
GR.100.L.C.B	Composite Longitudinal Black	1000	7mm	123mm	A15	✓
GR.100.L.C.G	Composite Longitudinal Grey	1000	7mm	123mm	A15	✓
GR.100.S.C.B	Composite Slotted Black	1000	10mm	123mm	A15	×
GR.100.S.C.G	Composite Slotted Grey	1000	10mm	123mm	A15	×
GR.100.M.C	Composite Mesh	500	7mm	123mm	B125	✓
GR.100.P.SS	Stainless Steel Longitudinal	1000	6mm	123mm	C250	✓
GR.100.M.SS	Stainless Steel Mesh	1000	6mm	123mm	C250	✓
GR.100.S.DI	Ductile Iron Slotted	500	8mm	123mm	C250	✓

LITE Prem - 150mm depth

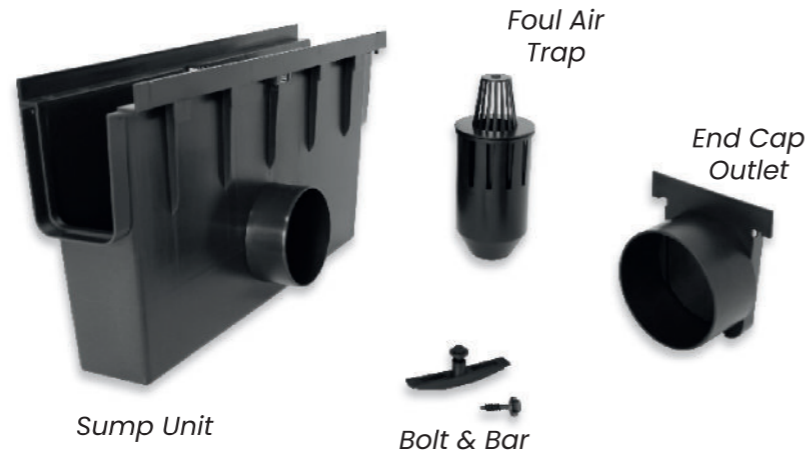
The Lite Prem 100 is one of the most adaptable drainage systems on the market since it is durable, flexible, and lightweight. There are many alternatives for your projects thanks to the 10+ grating options allowing for up to C250 loading capacity.

Please see the diagram below for specific measurements on the Lite Prem 100 System



Accessories

- End Cap Outlet
- End Cap
- Sump Unit
- Bolt & Bar
- Foul Air Trap



Sump Unit: The Sump Unit is excellent for collecting debris and waste that can get into the system. It comes with a silt bucket inside for easy cleaning.

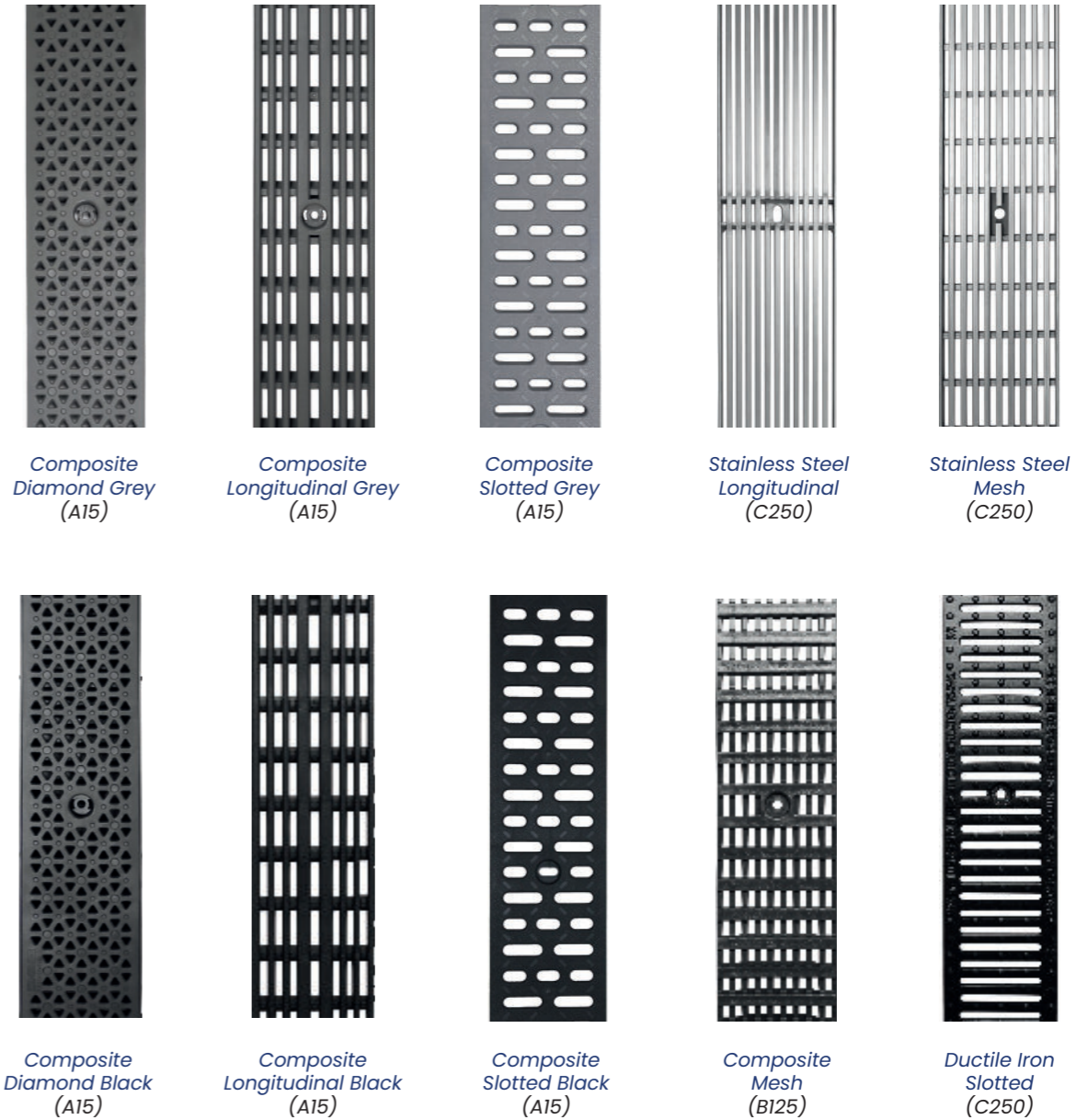
The Foul Air Trap: Acts as both a blocker of foul air from drains and a filter for debris such as leaves.

The End Cap/Outlet: Doubles up as an end cap for the channel or you can knock out the center to convert it into an outlet.

The Bolt & Bar: A simple but strong locking device for securing down the gratings on this Lite Prem 100 System.

Reference	Height (mm)	Invert Height	Overall Width	Weight (KG)	Load Class	Outlet Inv. Height	Outlet
LITE.P.100.SUMP	280	260	130	1.2	A,B,C	250	110
LITE.P.100.EC	150	n/a	130	0.4	A,B,C	n/a	110
LITE.P.100.O	150	n/a	130	0.6	A,B,C	n/a	110
LITE.P.100.FAT	90	n/a	85	0.4	A,B,C	n/a	110
LITE.P.100.BB	11	n/a	95	0.1	A,B,C	n/a	n/a

Grating Options - 150mm

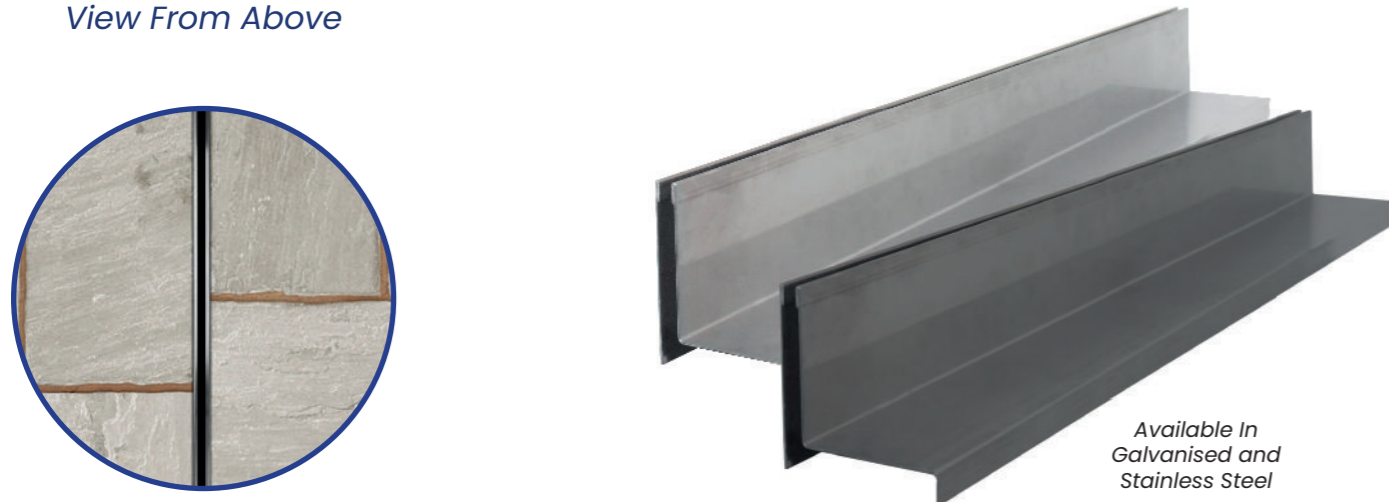


Reference	Description	Length (mm)	Slot Width	Overall Width	Load Class	SafeHeel
GR.100.D.C.B	Composite Diamond Black	1000	6mm	123mm	A15	✓
GR.100.D.C.G	Composite Diamond Grey	1000	6mm	123mm	A15	✓
GR.100.L.C.B	Composite Longitudinal Black	1000	7mm	123mm	A15	✓
GR.100.L.C.G	Composite Longitudinal Grey	1000	7mm	123mm	A15	✓
GR.100.S.C.B	Composite Slotted Black	1000	10mm	123mm	A15	×
GR.100.S.C.G	Composite Slotted Grey	1000	10mm	123mm	A15	×
GR.100.M.C	Composite Mesh	500	7mm	123mm	B125	✓
GR.100.P.SS	Stainless Steel Longitudinal	1000	6mm	123mm	C250	✓
GR.100.M.SS	Stainless Steel Mesh	1000	6mm	123mm	C250	✓
GR.100.S.DI	Ductile Iron Slotted	500	8mm	123mm	C250	✓

LITE Prem - Offset Paveslot

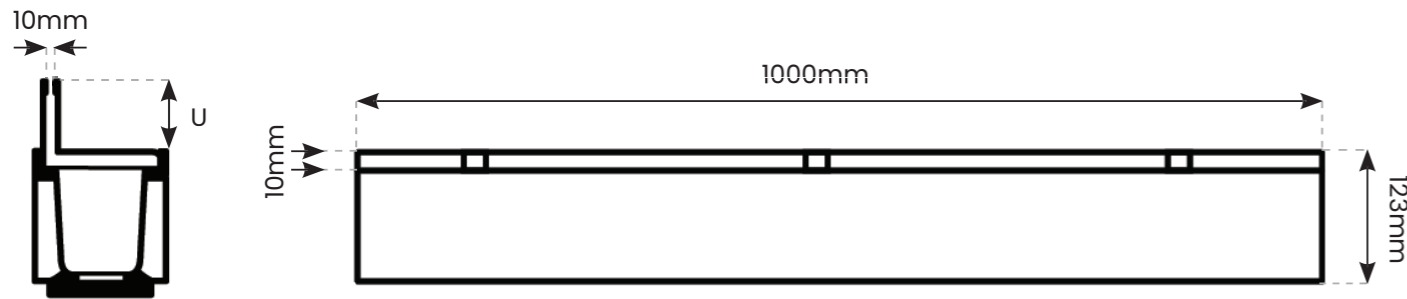
Lite Prem Paveslot is specifically designed for integration into high-quality natural stone and paving surfaces. The discrete inlet slot enables efficient drainage without compromising the ground design. We offer both single & twin slotted Paveslot as well as an access tray for cleaning purposes.

View From Above



Available In Galvanised and Stainless Steel

Diagram - Offset Paveslot

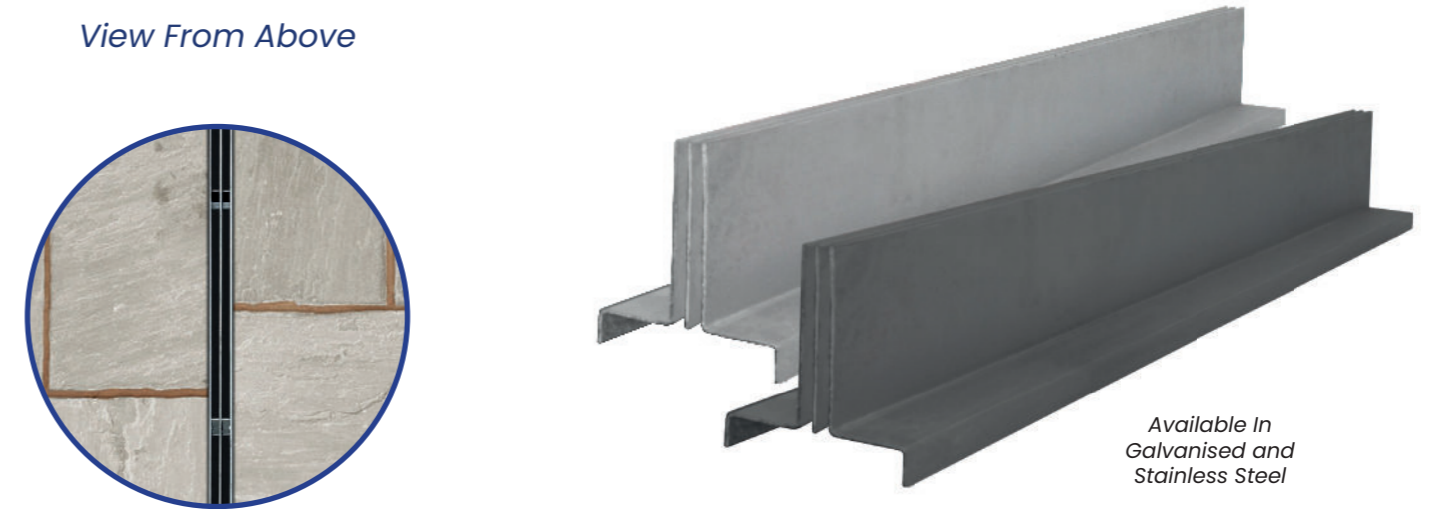


Reference	Description	Length (mm)	Slot Width	Overall Width	Load Class	Upstand (u)
GR.GOP.60	Galvanised Offset Paveslot	1000	10	123	B125	60mm
GR.GOP.105	Galvanised Offset Paveslot	1000	10	123	C250	105mm
GR.GOP.150	Galvanised Offset Paveslot	1000	10	123	C250	150mm
GR.SSOP.60	Stainless Steel Offset Paveslot	1000	10	123	B125	60mm
GR.SSOP.105	Stainless Steel Offset Paveslot	1000	10	123	C250	105mm
GR.SSOP.150	Stainless Steel Offset Paveslot	1000	10	123	C250	150mm

LITE Prem - Twin Paveslot

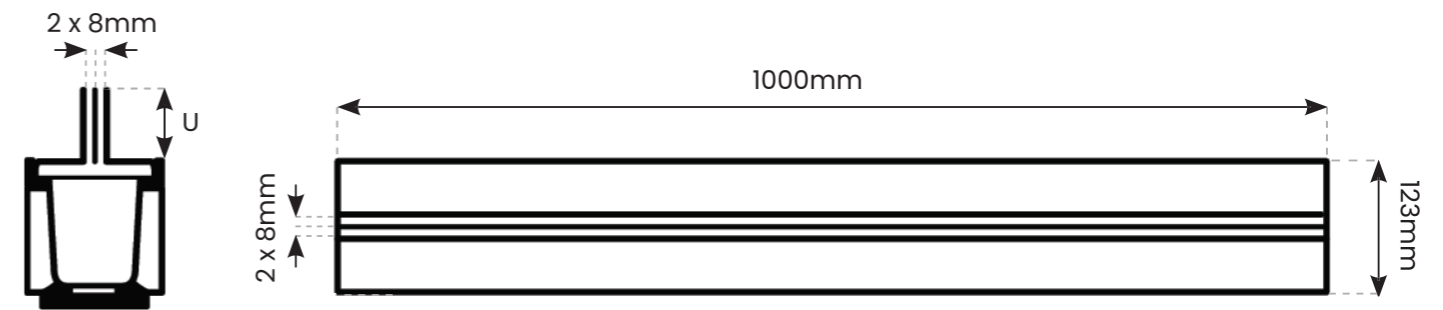
Lite Prem Paveslot is specifically designed for integration into high-quality natural stone and paving surfaces. The discrete inlet slot enables efficient drainage without compromising the ground design. We offer both single & twin slotted Paveslot as well as an access tray for cleaning purposes.

View From Above



Available In Galvanised and Stainless Steel

Diagram - Twin Paveslot



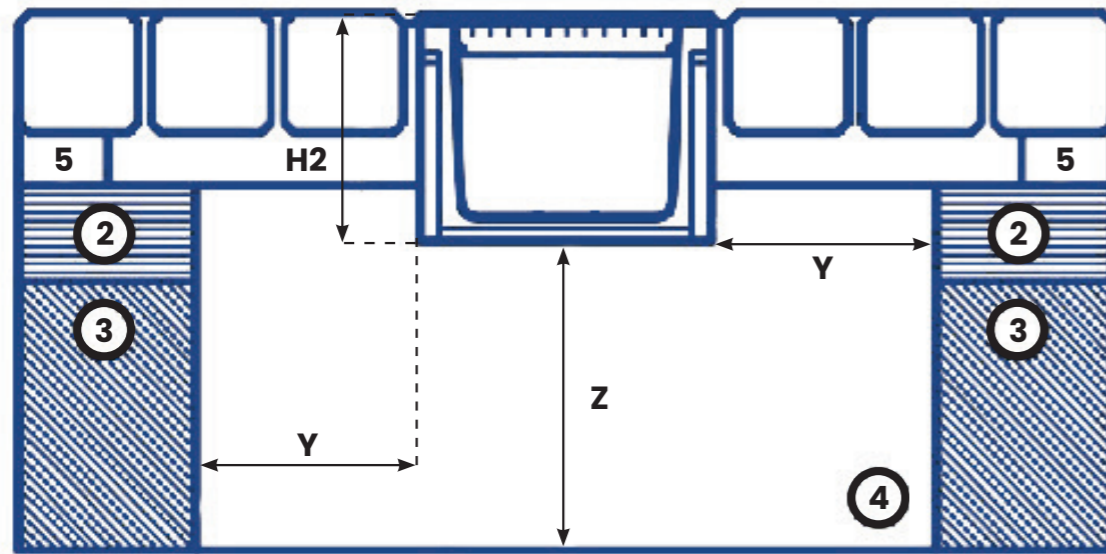
Reference	Description	Length (mm)	Slot Width	Overall Width	Load Class	Upstand (u)
GR.GTP.60	Galvanised Twin Paveslot	1000	2x8mm	123	B125	60mm
GR.GTP.105	Galvanised Twin Paveslot	1000	2x8mm	123	C250	105mm
GR.GTP.150	Galvanised Twin Paveslot	1000	2x8mm	123	C250	150mm
GR.SSTP.60	Stainless Steel Twin Paveslot	1000	2x8mm	123	B125	60mm
GR.SSTP.105	Stainless Steel Twin Paveslot	1000	2x8mm	123	C250	105mm
GR.SSTP.150	Stainless Steel Twin Paveslot	1000	2x8mm	123	C250	150mm

Installation Guide

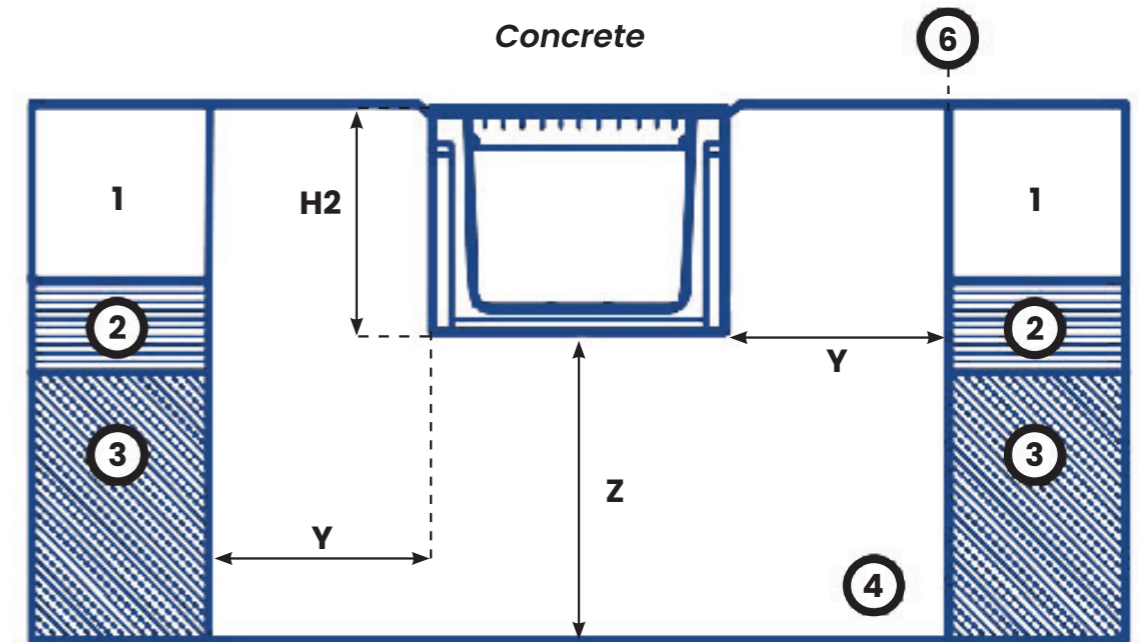
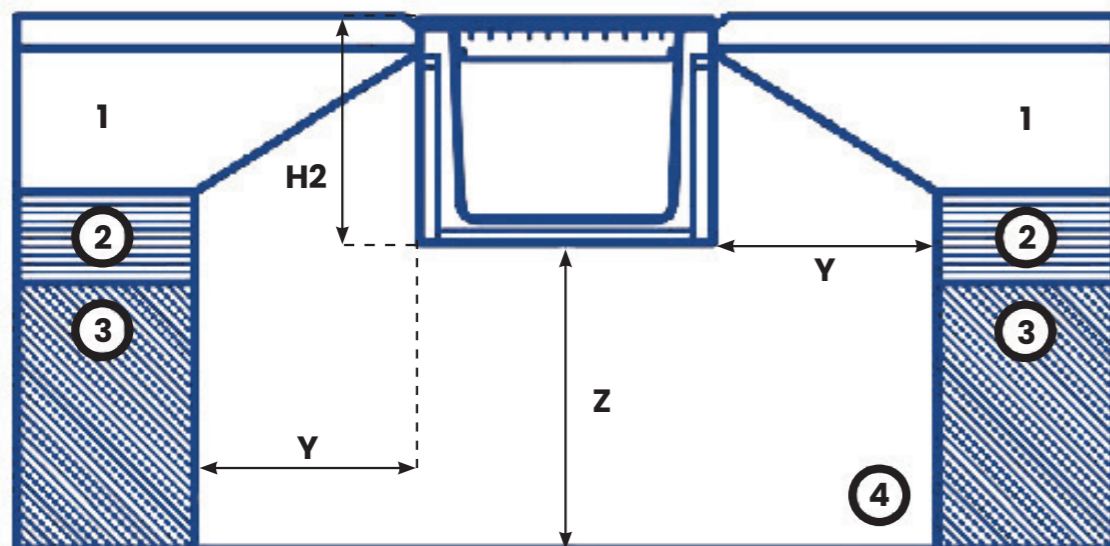
Ground conditions must be suitable and all dimensions shown are the minimum requirement. Engineering advice should be taken where necessary and any questions should be directed to Polycon's technical team by emailing us at sales@polycon.co.uk or by calling us on 0151 424 9747.

1	2	3	4	5	6
Concrete	Sub Base	Earth	Concrete Haunch	Sand Layer	Expansion Joint

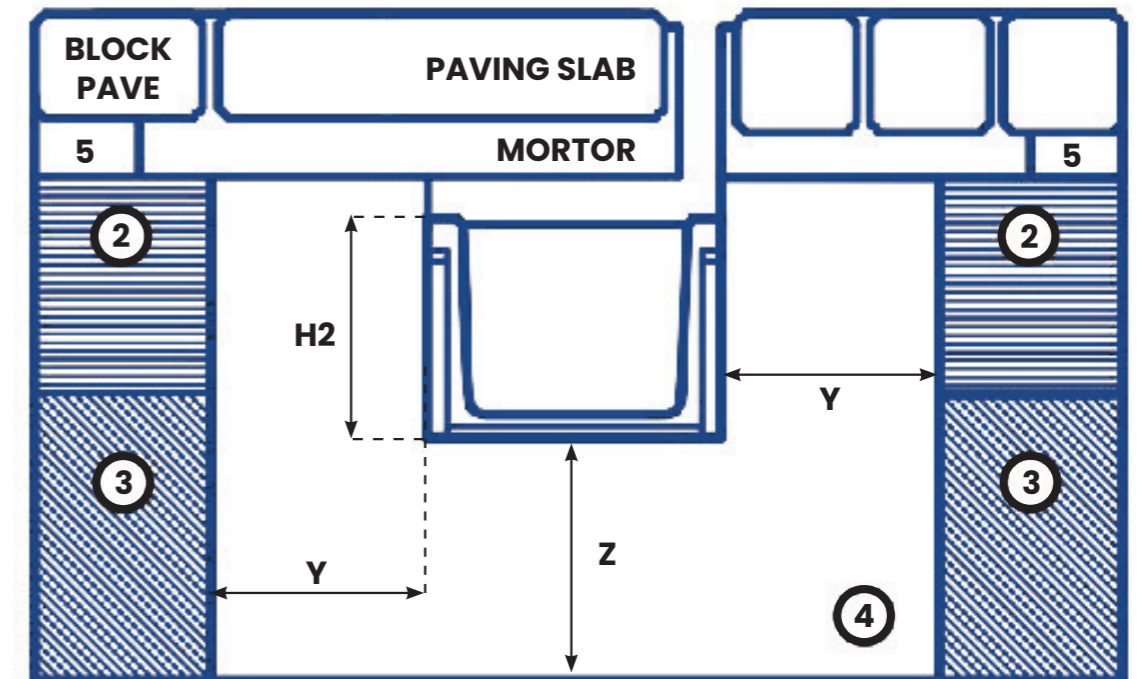
Block Paving



Tarmac



Paveslot



Load Class	A15	B125	C250
H2 - Channel Height	Channel Height	Channel Height	Channel Height
Y - Minimum Surround	100mm	150mm	150mm
Z - Minimum Surround	100mm	150mm	150mm
T1 - Minimum Depth	40mm	40mm	40mm
T2 - Maximum Depth	95mm	55mm	55mm

** Minimum Concrete Haunch 25 N/mm².
Detail A allow for overbuild of 3mm to 5mm above the grating surfaces.



Polycon Surface Water Drainage

**Widnes Business Park
Foundry Lane
Widnes
Cheshire
WA8 8UB**

**www.polycon.co.uk
0151 422 9747
sales@polycon.co.uk**

Service . Range . Knowledge